



The Downs and Valley Parishes Magazine No. 28 JULY 2025



THE
RED LION
Ilmington

**Great drinks,
good bites and
that Cotswold vibe
you can't beat.**



BOOK YOUR
TABLE HERE

📍 The Red Lion, Front St, Ilmington, CV36 4LX

✉ info@redlionilmington.co.uk

☎ 01608 682 089

Plush  Pizza

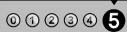


Weddings - Parties
Private Events
www.plushpizza.co.uk



facebook

FOOD HYGIENE RATING



WAGGAWAY 

PET CARE SERVICES IN YOUR AREA

Dog walking - Puppy care - Drop-in visits

Email: waggawaypetcare@gmail.com

Tel: 07498 220272 or 07759 181391

Find us on Facebook: WAGGAWAY

- Professional - Reliable
- Trustworthy - Caring
- Experienced
- First aid certified
- Fully insured
- DBS checked
- References available



"FOR LOVING CARE WHEN YOU CAN'T BE THERE"

ILMINGTON COMMUNITY **SHOP * CAFE**

Serving our village

Our volunteers are the most valuable part of our business.

We have a wide range of roles, customer-facing and behind the scenes. Please let us know if you can spare a few hours to become part of our friendly team. Training provided.

Call **01608 682838** to find out more.
www.ilmingtonshop.co.uk

Dance for Joy!



Beginners' Circle Dance group
Village Hall, Stretton on Fosse.

1st and 3rd Tuesdays, 2.30 – 4pm

£5 per session. Geri Hunting 07968 338848



R i Pets



Compassionate at home pet euthanasia, in and around the North Cotswolds.

We firmly believe that saying good-bye to a beloved pet should be a time for compassion and dignity, giving your pet and whole family the most peaceful kindest experience possible.



www.RiPets.co.uk

07405 770803



R. Locke & Son

Independent Family Funeral Directors – Est 1853



Generations of Care

Caution Corner
BRAILES

OX15 5AZ

t: (01608) 685274

For more information about our services, to view our funeral announcements and online donations, please visit

www.rlockeandson.co.uk



Golden Charter
Funeral Plans 

Service Rota July 2025

July 2025	St George's Darlingscott	St Mary's Ilmington	St Mary's Preston-on-Stour	St Peter's Stretton-on-Fosse	St Gregory's Tredington	St Mary's Whitchurch
6th Trinity 3		11.00am Holy Communion (1662)	6.00pm Evensong (1662)	9.30am Holy Communion	11.00am Morning Worship	9.30am Morning Worship
13th Trinity 4	11.00am Morning Worship	11.00am Morning Worship	9.30am Holy Communion (1662)		11.00am Holy Communion	
20th Trinity 5		11.00am Holy Communion		9.30am Holy Communion	11.00am Morning Prayer	11.00am Holy Communion
27th Trinity 6	4.00pm Evening Prayer (1662)	6.00pm Evensong (1662)	11.00am Morning Worship		11.00am Holy Communion	

Church web-pages - For further information, please search for the Church name and click on the relevant 'A Church Near You' page. (This is more effective than searching 'A Church Near You' directly.)

Ministers:

Rector: The Revd Canon Dr Richard Cooke or Richard.Cooke.Ilmington@Outlook.com 07952 544820 (mobile) or 01608 544821 (landline)

Hon. Asst Minister: The Revd Dr Tim Seller 01608 682244 (landline)

Reader: Ros Wakefield 01608 682146 (landline)

Reader Emeritus: Malcolm Davies 01789 450793 (landline)

Churchwardens:

Tredington *Posts vacant – contact the Rector*

Darlingscott Doreen McCarroll 01608 682949 (landline)

Ilmington Jane Downie 01608 682720 (landline)
Paul Clark 07868 526830 (mobile)
Andrew Holman- West 07712 193773 (mobile)

Preston-on-Stour Andrew Holman- West

Stretton-on-Fosse *Posts vacant – contact the Rector*

Whitchurch Carol Rutter 01789 450795 (landline)

Richard Cooke, the Rector, writes...

Faith in the Future?

From long before I was ordained in 1988, social scientists, followed by the media, have been predicting the demise of Christian faith in this country. The crude version of the 'secularisation thesis' was that as people became more educated they became less religious, and eventually Christian and other faiths would die out.

In the intervening 37 years I have seen a good deal of church decline. But, while faith might be less widespread than it once was, and is certainly much less expressed by attending a Sunday service, it has never felt to me that Christian faith was on course to die out altogether. Christian faith might be believed in a different way, and practised in different forms, today, but deep down it is still there in often unexpected ways.

So it was intriguing to come across a report and a book recently which raise some questions about whether the secularization thesis really holds amongst younger adults today. *The Quiet Revival* report came from the Bible Society, based on polling by YouGov amongst 18-24 year olds. The pollsters found, to their surprise, that 16% of that age group said that they attended church at least monthly compared to just 4% of the equivalent age group in 2018. Critics were quick to point out that this reported attendance does not seem to be reflected in actual attendance figures (of which the CofE's are some of the most reliable), but leaving that aside it does seem as if the 18-24s surveyed were much more open to Christian faith than their older siblings or their parents have been.

Why might that be? The book, Lamorna Ash's *Don't Forget We're Here Forever*, gives some pointers to an answer. The author noticed, amongst some of her contemporaries, a sense of longing for something deeper. Not a Christian herself, and not from a particularly Christian family, she spent two years meeting and talking to people who had experienced some kind of conversion, and her journey makes fascinating reading. It's not a cut-and-dried, 'Here's the Answer' kind of book, but a questioning, exploring, curious and inquisitive report from the front lines. In the process she found herself drawn into Christian faith, rather to her surprise. The depth of ancient wisdom, the discovery that not all Christians held conservative views on everything, and the recognition that there are multiple steps of faith that have to be taken over and over again, all combine to make a refreshing sideways look at what faith in the future might be like. It won't be quite the same as the faith of the past, but in an age of uncertainties Lamorna Ash suggests that 'it may be something to hold on to.'

One of my favourite quotes comes from G.K.Chesterton, the author of the *Father Brown* stories. He wrote: 'At least five times... the Faith has to all appearance gone to the dogs. In each of these five cases it was the dog that died.' Perhaps there will be faith in the future after all.

From the Registers

Baptism

At St Mary's Ilmington: on 14 June, Teddy Wilson, aged 11 months

Banns of Marriage

At St Mary's, Ilmington: on 1, 8, 15 June Florence van der Spek and Alex Bugle of St Barnabas Southfields, London, marriage to take place at Ilmington on 12 July 2025

Editor's Note

The *deadline for copy for the August issue* **Saturday 19 July**. Send copy to Susan Brock, Editor, E. s.brock9@btinternet.com, Daisy Cottage, Front St., Ilmington, CV36 4LA. Please note that the limit for editorial articles is 150 words. Enquiries about advertising to Tim Seller: E. Tim.Seller@outlook.com, Long Barn, Back St., Ilmington, CV36 4LJ. The stunning image on the cover this month is by Stephen Prosser. If you have a piece of art work or a photo, why not share it with the magazine's readers? It should be portrait shape so it fits on the cover and a jpg or PDF file makes my life easier!

Susan Brock, Editor

Nature Notes July 2025

When visiting the seaside, have you ever wondered what was beneath the surface of the sea? You may have been fortunate to see dolphins playing in the waves, a whale breaking the surface, sea otters, or sea lions basking on the beach. You may have seen starfish or jellyfish. Many years ago, Jacques Cousteau showed us this amazing world by taking cameras under the sea and introducing us to the incredible creatures beneath the surface that many of us would not have seen or maybe known about otherwise. However recent expeditions have identified over 800 new species, including guitar sharks, squat lobsters, pygmy pipe horses, and various other creatures. These discoveries highlight the vast, still-unexplored biodiversity of the deep sea. In Genesis 1: 21 the Bible tells us that it was God who created great sea creatures and all living creatures that swim in the ocean.

Gill

OUTSIDE THE PARISHES

THE LADIES' BREAKFAST

at the Halford Bridge Inn, Saturday 5th July 2025 at 9.00am for 9.15am

There is a warm welcome for everyone to our Summer Breakfast, with our Guest Speaker **Lucy Edyvean**. Lucy lives locally and it will be a delight to hear her personal faith journey and how 'my whole world turned the right way up!'. She blesses others through her 'behind the scenes' ministry and co-hosts a Zoom meeting for mainly those around London, and with her gift of language as a 'wordsmith' she transcribes theological talks and for the Alpha course. She says 'It's all too easy to be absorbed back into the world and let your spiritual life just be a some of her life experiences. To reserve a place please contact Liz Har-

WHITCHURCH

St Mary's **Notes from a Small Church in a Field**

We've written in earlier 'notes' about St Mary's unusual features. Here's more. On the east exterior end of the church, above the east window you can see three stone shields, carved in relief, set in a panel. It would appear that the arms on these shields represent the former lords of the manors of Whitchurch before the chancel was altered at the end of the 15th century by Edward Belknap after he was granted the advowson of Whitchurch by Henry VII in 1497. At a guess the shields represent the de Montfort, Stafford and Boteler families. Originally, the shields would have been painted, though if any of the paint survived to the 17th century, it's unlikely to have survived the Puritans. No amount of investigation of the architectural importance of these shields has brought anything to light, and no evidence can be found in any other church of anything like them. They appear to be truly unique.

Robert Howe

TREDINGTON WITH BLACKWELL AND DARLINGS SCOTT

Newbold and Tredington C of E Primary School

As the end of the academic year approaches, the children at Newbold and Tredington C of E Primary School have been extremely busy performing end of year productions, participating in a fun filled Sports Day and hosting an OPAL play afternoon and picnic with their parents and carers. It has been lovely to see so many people within our community coming together to celebrate the achievements of the children. The pupils had a fantastic day out on their school trips. Our youngest children in Reception headed to the British Motor Museum, whilst Year 1 and 2 had a brilliant day out at Compton Verney where they learnt all about habitats and did some pond dipping! Our eldest children in Year 5 and 6 also participated in a workshop at Compton Verney linked to their topic on China. What a marvellous end to what has been an excellent academic year! We wish you all a relaxing and enjoyable Summer.

With love from the staff and children at Newbold and Tredington C of E Primary School

RNLI Book Fair on 31 May Tredington

A very big thank you to everyone who donated books and jigsaw puzzles for our Coffee Morning and Fair at the end of May. Thank you also to all those who donated money, helped on the day and came to buy books and puzzles. We made just over £500 to support the volunteer crews of the RNLI saving lives at sea. Thank you everyone.

Jenny Plenderleith

Tredington Village Summer Lunch Sunday 13 July, 2025

Our summer lunch will be held on the 13 July in the church at 1.00. It will be a cold buffet, help yourself selection of various meats, salad, fish and hot potatoes and of course super puddings. Don't forget to sign the list inside the church so we know how many to cater for and also please let us know if you are able to help with bringing some food. Our charity is caring for people with Dementia locally. It will be a fun fund raising event, in church so it will be dry and cool. Bring your own wine, but glasses and soft drinks provided. This is open to all people in the village so don't be shy, you need not attend church. Our church welcomes everyone. We can help with transport. Enquiries Marilyn Payne 666206, Sarah Taylor 662782, Jenny Plenderleith 664278
Jenny Plenderleith

Tredington & Blackwell WI

The annual WI outing will be on Thursday 10th July. The next WI meeting is on Thursday 14th August at 7pm in the Community Hall - more details in the August magazine. All women are welcome (Guests £5)

Marilyn Payne, WI Programme Secretary/Hall Trustee

Craft & Chatter

The next meetings are at 2pm on Thursday 3rd and Monday 21st July in the Community Hall. This is a social group, with plenty of conversation, tea & cake, whilst craft is optional. £1 per person, no membership required. For more information contact Vanessa on 07818 599353 or vanessa @tredingtonandblackwellwi.co.uk

Vanessa Ward, WI Secretary/Hall Trustee

Tuesday Morning Qigong

Start your day with balance and energy by joining our 45-minute Qigong class at 8.00am—perfect for those heading to work. This class is designed to suit all levels of experience, from beginners to seasoned practitioners, and is accessible to everyone, with seated exercises available for those who prefer them. £7 per person (cash/card on the day or via <https://breath-therapy.uk/events>).

Film Night

Our next film will be shown on Friday 1st August in the Community Hall. The bar opens at 7pm, with the film, a dark, British comedy, starting at 7.30pm. There will be a short interval with bar and ice creams available. Admission is free - a voluntary donation from non-members is appreciated. For more details of this and future films, or to join our email group or membership contact Gill at gillgoodlad@hotmail.com or text to 07789810877.

Gill Goodlad, WI Treasurer/Hall Trustee

BLACKWELL

BLACKWELL Village Hall (CV36 4PE)

We are holding a SUMMER FETE and FUN DOG SHOW on Sunday 6th July 12 noon - 4.30pm. Free entry and Parking

Please come and join us for BBQ at lunchtime with a Beer Tent serving real ale, Pimm's, Ice cream. Stalls including, Garden Plants and advice, Cakes, Ceramics, Dog treats, Tombola and Raffle and more! Fun and many games for all ages too. Come and try Dog Agility area too.

The Fun Dog Show starts at 1.30pm. Classes: 1.30pm Most Handsome Dog, 1.45pm Prettiest Bitch, 2pm Cutest Puppy (Up to 12 months), 2.15pm Best Veteran Dog (Over 10 years), 2.30pm Waggiest Tail, 2.45pm Best Biscuit Catcher, 3pm Best rescue, 3.15pm Best Junior Handler (Primary School ag), 3.30 pm BEST IN SHOW. Please come and join us for a fun day to remember whilst helping raise funds to maintain our Village Hall.

Cathryn Noon

PRESTON ON STOUR

Preston Village Hall

Village BBQ - 1pm Sunday 13th July

Lots of good barbecued meats, vegetarian options and homemade salads to be enjoyed in the Village Hall garden. Starts at 1pm and food is served until we run out! Please bring your own liquid refreshments and glasses. A lovely summer event for families and friends.

Film Night - 7.00 for 7.30pm Friday July 25th

This month's film will be 'Bridget Jones: Mad about the Boy' (15). This is the fourth film in the much acclaimed series of delightfully witty and heartwarming films. Tickets £3.50 on the door.

Margaret Brocklehurst

ILMINGTON

Ilmington C of E Primary School

This past month, Jazz Class, our year 5's and 6's enjoyed a fabulous residential trip to Adventure4You near Towcester. The children spent a few days taking part in some great adventurous activities. A lot of fun was had by all and the children returned tired and happy. Our May Day celebrations once again were a fantastic event where we crowned our May Monarch and all the children took part in singing our traditional songs and dancing where we were joined by Ilmington Morris. It was lovely to see the playground full of parents and friends. Our keystone 2 children are looking forward to the end of

year production, The Greatest Show, and are beginning to practise the songs and drama for this. Preparations are also currently underway for our Pen Down Day where we will have a day of practical activities which will help to enhance our village community involvement.

Paul Crouch, Headteacher

Would You Like Weekly Updates of Ilmington News?

Then sign up for the 'Ilmington Circulation' weekly email newsletter. Published by the 20:20 committee, the 'Circulation' contains useful information on upcoming activities in the village, a 'Shop Window' to advertise items that are free, for sale or wanted, as well as links to our calendar, weather forecast and weekly jigsaw puzzle! To receive the weekly newsletter send an email to info@ilmington2020vision.co.uk, go to our website (www.ilmington2020vision.co.uk) or look for 'Ilmington Circulation' on Facebook.

Clair Cole

Wednesday Club Next Meeting on 9th July, 1pm outside the Village Hall

The visit to the Guide Dogs Breeding Centre was everything one could hope for apart from not being able to take one of those adorable puppies home! We had a very interesting 2 hour tour. This wonderful charity receives no funding from the government so relies solely on public donations.

Our next visit is to **Hill Close Gardens in Warwick on Wednesday 9th July**. We have a large coach so everyone is welcome!

Members would have a free ride and pay just for admittance (Approx £7) whilst all others would pay a coach fee of £6 plus the admittance fee. What a wonderful opportunity for everyone! Please ring me on 682 996 if you are interested.

We have another two birthday ladies in the month of July and they are Gill Grey on 17th and Irene Sabin on 21st. A very happy birthday then ladies! Edith Tuohy would like to thank all her friends who helped her to celebrate her 103rd birthday recently. She was especially touched by the warm welcome her American family (Sue and Emma) received from everyone. A big thank you from Edith.

Carole Clifford, Chair

Ilmington Village Hall Trustee Vacancies

There are two vacancies as trustees of the Village Hall and members of its management committee. The Hall is an important and well used centre for social events for the village community and surrounding areas. Currently there are 10 of a possible 12 members of the management committee and we would welcome interest from those who would like to help sustain and steer the future of this institution. For an overview of what's involved and how you might help, please call Bryan on 07561273978.

Bryan Clifford, Chair

Repair Cafe

Could you be interested in joining a group of like-minded people who enjoy repairing household items? The village hall trustees are keen to provide an opportunity for the local community to repair and reuse household items rather than throw them away and buy new. It saves money and helps reduce the impact of climate change. It would need a small group of participants, at least one having experience in repairing electrical items, to meet periodically in a cafe environment at the village hall to provide advice and help to those in the village who are less able to repair household items. To show interest please call Bryan on 07561273978 and to learn more about how other communities do this listen to the following podcast:

<https://sustainablewarwickshire.podbean.com/e/repair-cafes-and-the-circular-economy/>

Bryan Clifford, Chair, Village Hall Committee

Ilmington Horticultural Society IHS@100 events

This month's GARDEN VISIT is courtesy of the Wednesday Club who have organised a coach to visit Hill Close Gardens in Warwick **on Wednesday 9th July leaving Ilmington Village Hall at 1.15pm**. Everyone is welcome! Non-members pay the coach fare of £6 plus the entrance fee of £7 (for concessions). If you'd like to book a place please contact Carole Clifford on 01608 682996. Thank you Wednesday Club!

IHS Committee

Ilmington Horticultural Society Annual Flower and Produce Show Bank Holiday Monday 25 August

This year we have some new classes to stir your competitive spirits. In the Flower-arranging Section: a chance to celebrate Horticultural Society's 100th anniversary with a formal arrangement on that theme with accessories; in the Drinks Section: a non-alcoholic cocktail in a lidded jam jar accompanied by a list of ingredients and serving suggestions and finally in Handicrafts: something you have upcycled with a 'before' photograph of the original. For 11s and under let your imagination soar and make a fantastic hat for yourself any style, any size.

Of course all the old favourites will be there as well. Schedules and entry forms will be available from the shop at the beginning of July and online at <https://ilmington-pc.gov.uk/ilmington-horticultural-society/>.

Ilmington Horticultural Society Committee



Agnes

Insured and CRB checked with Full UK driving licence.

References available on request.

SUPPORTING YOU IN YOUR HOME WITH:

- Personal Care
- Companionship & Support

☎ 07933 309 431

✉ agnieszka.jen1972@gmail.com



T.A. HALE
GROVE GARAGE EBRINGTON
Agricultural & Motor
Engineers

MOT – SERVICE – REPAIRS
AIR CONDITIONING
DELPHI BOSCH DIAGNOSTICS

We now MOT Motorbikes

Ebrington, Glos. GL55 6NW

T: 01386 593000

F: 01386 593300

E: tahale.grove@hotmail.com

**For a special occasion, regular event
or meeting, why not book
ILMINGTON VILLAGE HALL
Foxcote Hill, CV36 4LD**

(licensed bar available)



For bookings and other information please refer to the website:
www.ilmington-villagehall.com
or call 01608 544821



PARISH CLEANING

**DOMESTIC-COMMERCIAL-
PROFESSIONAL-RELIABLE**

T: 01789459401

M: 07875738109

parishcleaningservices@btinternet.com



Ilmington Multi-Sports Facility
Tennis, Five a Side Football, Basketball
and Floorball. LED Floodlights



Managed and run by Ilmington Tennis Club
 on behalf of Ilmington Parish Council.

The Tennis club welcomes players of all ages and levels of play.

Coaching including taster sessions are available.

Full information and contact details on IMSF's website.

www.imsf.co.uk

ALLEN & SON
 FUNERAL DIRECTORS

EST 1928

An independent, family-owned and run company,
 serving The Cotswolds area since 1928.

- Friendly and professional care and support
- 24 Hour Service
- Qualified Funeral Director
- Funerals tailored to individual needs and wishes
- Peaceful and spacious Chapel of Rest
- Funeral pre-planning
- Convenient on-site parking

Tel: 01608 650633 ~ 24 HOUR SERVICE

London Road, Moreton-in-Marsh, GL56 0HJ

Email: office@allenfunerals.co.uk

Website: www.allenfunerals.co.uk



Allen & Son Ltd is an appointed representative of Golden Charter Limited trading as Golden Charter Funeral Plans which is authorised and regulated by the Financial Conduct Authority (FRN:965279). Registered in England No. 02511598 Registered Office: One Fleet Place, London EC4M 7WS



**All Square
 Cleaning**

Professional cleaning of

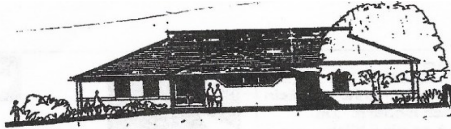
- Carpets & rugs
- Upholstery
- Tiled & stone floors
- Karndean & Amtico

- ★ Stain protection
- ★ Stain removal
- ★ Odour treatment
- ★ Fully trained & insured
- ★ Est: 2012

www.allsquarecleaning.co.uk

neilworsnop@allsquarecleaning.co.uk

01926 492696 // 07557 944461



STRETTON ON FOSSE VILLAGE HALL

Now you can book our refurbished, brighter Village Hall!

A private party? A wedding reception? A dance? A concert? A conference? A performance? A business meeting? A rehearsal?

- Car park and adjacent parking
- EV charging points (2x22kw, ~35p per kwh, Monta app)
- Free Superfast Broadband
- Glazed panoramic viewing onto paved patio /grassed walkabout area
- Recently refurbished breakout or private meeting room
- A comprehensively equipped kitchen with fast commercial dishwasher
- A stage with AV and lighting equipment, large screen

To book: [strettononfosse.com/village hall/booking request](http://strettononfosse.com/village-hall/booking-request)

For more information: strettonvillagehall@strettononfosse.com or contact Izzi on 07850 314161.

The Three Parishes Millennium Hall

Preston on Stour

www.prestononstour.org

Book your next event here

**Music & Theatrical Events, Weddings,
Celebrations, Exhibitions, Business Meetings,
Seasonal Events, etc**

**Fully Equipped for Catering & Events
WiFi, PPL & PRS Licence, Car Park**



**FILM NIGHT
LAST
FRIDAY
OF THE MONTH**

To book call Carole Sambrook Hurst

Tel 01789 450486 or Email prestononstour.hall@gmail.com

Special rates for residents of Preston on Stour, Atherstone on Stour, Wimpstone and Whitchurch



Professional Horticulturalists

Established in 1992.

- Design & Consultancy
- Advice and Mentoring
- Planting Plans
- Garden Maintenance

Based in Ilmington, Nr Shipston On Stour

Contact:

info@oxfordlawnsandgardens.co.uk

www.oxfordlawnsandgardens.co.uk

R.Locke & Son

Independent Family Funeral Directors – Est 1853



Generations of Care

Caution Corner

BRAILES

OX15 5AZ

t: (01608) 685274

For more information about our services,
to view our funeral announcements
and online donations, please visit

www.rlockeandson.co.uk



Golden Charter
Funeral Plans 



Peacock Gymnastics...
where kids learn to flip & fly



GYMNASTICS FOR ALL



- Age 2 years to Teens
- Boys & Girls Gymnastics
- Parkour & Cheerleading
- Rhythmic & Preschool



BIRTHDAY PARTIES & HOLIDAY CLUBS

Bookings & Enquiries email:
flipping@peacockgymnastics.com



www.peacockgymnastics.com

Peacock Gymnastics Academy, Shipston on Stour CV36 4QZ

Planning a wedding?

Need local accommodation?

2 Four star cottages

Each cottage sleeps four

Warm welcome

www.tredingtonmill.co.uk

tredingtonmill@btinternet.com

01608 664626



THE HOWARD ARMS ILMINGTON

GOLD WINNER
West Midlands Tourism Awards 2023



Bar opening times

Monday to Saturday: 11am – 11pm

Sunday: 12pm – 10.30pm

Food serving times

Daytime:

Monday to Saturday: 12pm – 2.30pm

Evening:

Monday to Thursday: 6pm – 9pm

Friday & Saturday: 6pm – 9.30pm

Sunday & Bank Holidays

12pm – 7.30pm

FOR BOOKINGS PLEASE CALL 01608 682226

OR

EMAIL: INFO@HOWARDARMS.COM

16

The Howard Arms, Lower Green, Ilmington,, Warwickshire, CV36 4LT